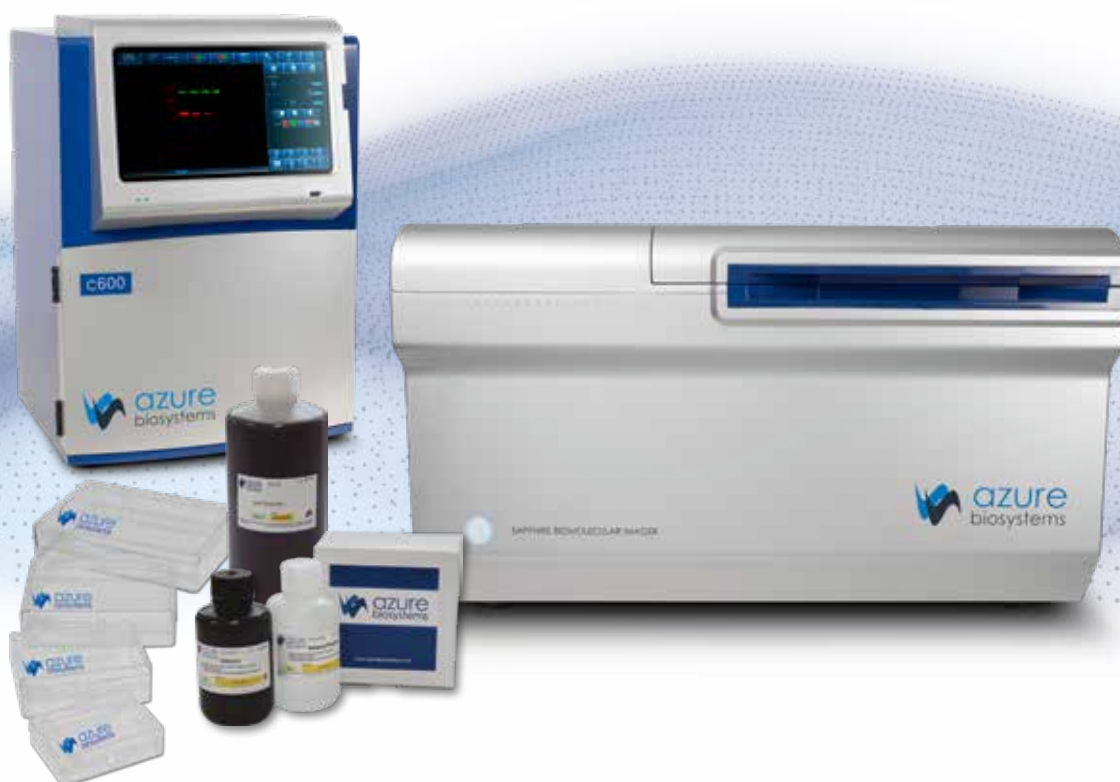


Azure Biosystems™

Product Catalog



About Azure Biosystems

At Azure Biosystems, we develop easy-to-use, high-performance imaging systems and high-quality reagents for life science research. By bringing a fresh approach to instrument design, technology, and user interface, we move past incremental improvements and go straight to innovations that substantially advance what a scientist can do. And in focusing on getting the highest quality data from these instruments—low backgrounds, sensitive detection, robust quantitation—we've created a line of reagents that consistently delivers reproducible results and streamlines workflows.

Providing scientists around the globe with high-caliber products for life science research, Azure Biosystems' innovations open the door to boundless scientific insights.

Learn more at azurebiosystems.com.



cSeries Imagers



Sapphire
Biomolecular Imager



Ao Absorbance
Microplate Reader



Reagents &
Blotting Accessories

Download our free Western Blotting Guidebook at www.azurebiosystems.com/guidebook.

Corporate Headquarters

6747 Sierra Court
Suite A-B
Dublin, CA 94568
USA

Phone: (925) 307-7127
(9am–4pm Pacific time)
To dial from outside of the US:
+1 925 307 7127
FAX: (925) 905-1816

Please send purchase orders to:

so@azurebiosystems.com

For product inquiries, please email

info@azurebiosystems.com

Copyright © 2019 Azure Biosystems. All rights reserved. The Azure Biosystems logo, Azure Biosystems™, cSeries™, Sapphire™ and Radiance™ are trademarks of Azure Biosystems, Inc. More information about Azure Biosystems intellectual property assets, including patents, trademarks and copyrights, is available at www.azurebiosystems.com or by contacting us by phone or email. All other trademarks are property of their respective owners.

Table of Contents

Quickly Find the Solution to Your Western Woes	4	Wash Buffers	35
IMAGING	5	Azure Blot Washing Buffer	36
Sapphire™ Biomolecular Imager	6	Azure Fluorescent Blot Washing Buffer	37
cSeries™ Imaging Systems	10	Chemiluminescent Detection	39
Azure c280	12	HRP-conjugated Secondary Antibodies	40
Azure c150 and c200	13	Azure ChemiWriter ECL	41
Software	14	Radiance Substrates	42
Accessories	16	Radiance ECL	43
REAGENTS AND CONSUMABLES	18	Radiance Q	44
Blotting Accessories	19	Radiance Plus Substrate	45
Incubation Trays	20	Azure Flash Western Chemiluminescence Kit	46
Background Quenching Sheets	21	HRP Stripping Buffer	47
Blot Development Folders	22	Fluorescent Detection	49
Transfer to Membrane	23	AzureSpectra Fluorescent Secondary Antibodies	50
Pre-cut Membranes	24	AzureSpectra Labeling Kits	52
Blotting Paper for Western Blotting	25	AzureSpectra Fluorescent Western Blotting Kits	53
Azure Transfer Buffer	26	AzureSpectra Fluorescent Demo Kits	54
Total Protein Detection	27	MICROPLATE READER	55
Azure Ponceau Stain	28	Ao Absorbance Microplate Reader	56
AzureRed Fluorescent Protein Stain	29	Ao Absorbance Microplate Reader Accessories and Filters	57
Membrane Blocking	31		
Azure Chemi Blot Blocking Buffer	32		
Azure Protein-Free Blot Blocking Buffer	33		
Azure Fluorescent Blot Blocking Buffer	34		

Quickly Find the Solution to Your Western Woes



Sensitivity

Reagents optimized to increase limit of detection.



Lower Background

Reagents optimized to lower background for cleaner blots.



Save Time

Products designed to save time.



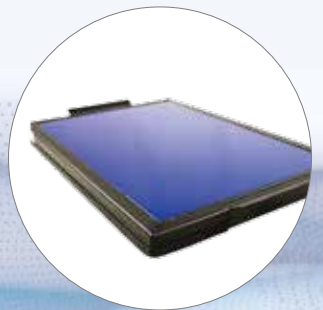
Quantitation

Products designed to increase quantitative accuracy.



Sample

Reagents that are available to sample.



IMAGING

Sapphire™ Biomolecular Imager

The next generation of laser-based imaging

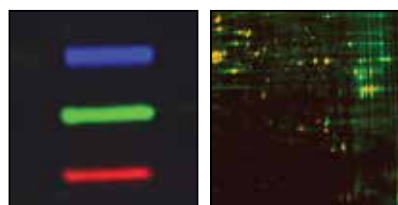
Breakthrough image capture and analysis

The Sapphire Biomolecular Imager is a next generation laser scanning system that provides you with exceptional data quality through extremely sensitive detection, ultra high resolution and broad linear dynamic range.

This system supports long and short wavelengths of near infrared fluorescence (NIR), red/green/blue (RGB) imaging, chemiluminescent imaging, phosphor imaging as well as optical densitometry (OD) of proteins in stained gels.*

- Improved multiplex fluorescent detection
- Chemiluminescence imaging, surpassing film
- Higher sensitivity for lower limits of detection (femtograms)
- Broad linear dynamic range for accurate quantitation
- Ease of use with intuitive control software

*Patent pending



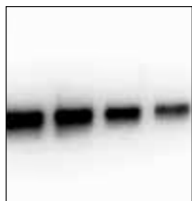
FLUORESCENCE IMAGING

Improve Your Quantitation

- Stable fluorescent signals enable reliable quantitation of weak and strong bands
- Probe for multiple proteins on a single blot, and get more results from each sample

Part Number	Name	Description
IS1024	Sapphire Biomolecular Imager – NIR	Laser excitation wavelengths at 685nm and 784nm
IS1025	Sapphire Biomolecular Imager – RGB	Laser excitation wavelengths at 488nm, 520nm and 658nm
IS1026	Sapphire Biomolecular Imager – RGBNIR	Laser excitation wavelengths at 488nm, 520 nm, 658nm and 784 nm
IS1027	Sapphire Biomolecular Imager – PI	Sapphire Biomolecular Imager for phosphor imaging
Additional Modules		
IS1003	Chemiluminescence Module	Add chemiluminescence detection and white light imaging to Sapphire Biomolecular Imager
IS1004	Phosphor Imaging Module	Add phosphor imaging to Sapphire Biomolecular Imager
IS1018	Q-Module – 520 Laser Module	Add 520nm laser and detector to Sapphire Biomolecular Imager – NIR

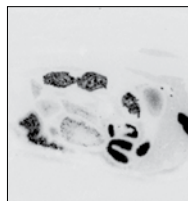
Sapphire™ Biomolecular Imager



CHEMILUMINESCENCE IMAGING

Enhance your Detection

- Femtogram detection of protein
- The speed and sensitivity of traditional film with 4X the dynamic range



PHOSPHOR IMAGING

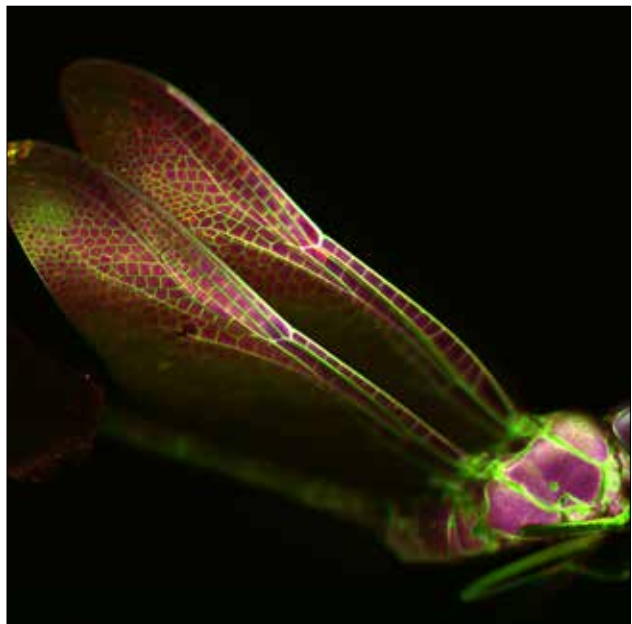
Improve Your Flexibility

- Scan storage phosphor screens for filmless autoradiography
- Wide dynamic range for sensitive detection

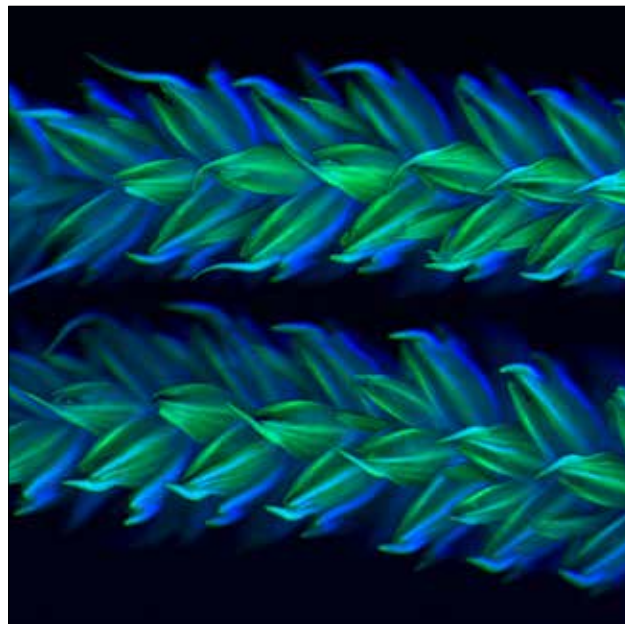
Specifications

	Sapphire NIR	Sapphire RGB	Sapphire RGBNIR	Sapphire PI
Part number	IS1024	IS1025	IS1026	IS1027
Laser excitation wavelengths	685, 784	488, 520, 658	488, 520, 658, 784	658
Bit depth	16 bit	16 bit	16 bit	16 bit
Scanning area	25 cm X 25 cm	25 cm X 25 cm	25 cm X 25 cm	25 cm X 25 cm
Scanning mode	Simultaneous or Sequential	Simultaneous or Sequential	Simultaneous or Sequential	Phosphor Imaging
Resolution	10 micron – 1000 micron	10 micron – 1000 micron	10 micron – 1000 micron	10 micron – 1000 micron
Detectors	Avalanche Photodiode	Photomultiplier Tube, Avalanche Photodiode	Photomultiplier Tube, Avalanche Photodiode	Photomultiplier Tube
Scanning speed	50 cm/s	50 cm/s	50 cm/s	50 cm/s
Filters	Red 725BP40, IR 832BP37	Blue 518BP22, Green 565BP24, Red 710BP40	Blue 518BP22, Green 565BP24, Red 710BP40, IR 832BP37	390BP40
Dimensions (W X H X D)	75 cm X 45 cm X 70 cm	75 cm X 45 cm X 70 cm	75 cm X 45 cm X 70 cm	75 cm X 45 cm X 70 cm
Weight	140 lbs	140 lbs	140 lbs	140 lbs
Power requirements	100 – 240 VAC ± 10%, 50/60 Hz	100 – 240 VAC ± 10%, 50/60 Hz	100 – 240 VAC ± 10%, 50/60 Hz	100 – 240 VAC ± 10%, 50/60 Hz
Computer	Windows 10 laptop or Windows Pro desktop PC and 4K monitor	Windows 10 laptop or Windows Pro desktop PC and 4K monitor	Windows 10 laptop or Windows Pro desktop PC and 4K monitor	Windows 10 laptop or Windows Pro desktop PC and 4K monitor
Q-Module	Optional	N/A	N/A	N/A
Laser excitation wavelength	520			
Filters	Green 565BP24			
Chemiluminescent Upgrade	Optional	Optional	Optional	Optional
Imaging area, chemiluminescent	16 cm X 13 cm	16 cm X 13 cm	16 cm X 13 cm	16 cm X 13 cm
Bit depth	16 bit	16 bit	16 bit	16 bit
Resolution	2688 X 2200	2688 X 2200	2688 X 2200	2688 X 2200
Imaging time	0-60 minutes	0-60 minutes	0-60 minutes	0-60 minutes
Visible imaging	Yes	Yes	Yes	Yes
Phosphor Imaging Module	Optional	Optional	Optional	N/A
Sample types	Storage phosphor screen (imaging plate)	Storage phosphor screen (imaging plate)	Storage phosphor screen (imaging plate)	

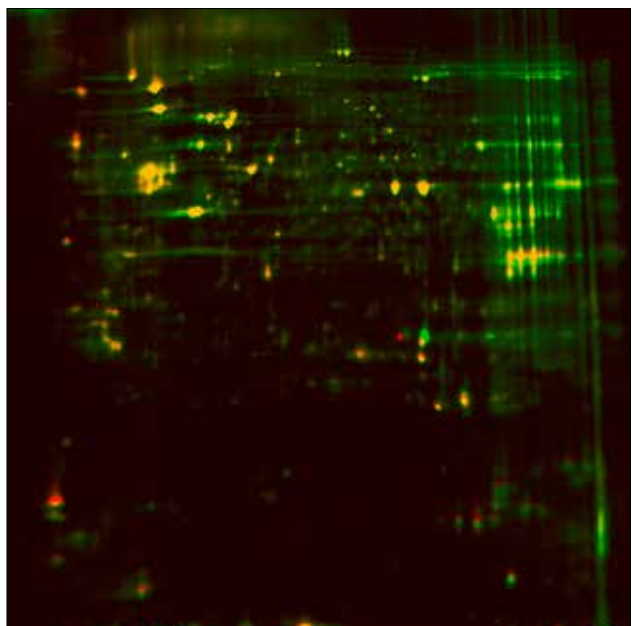
Sapphire™ Biomolecular Imager



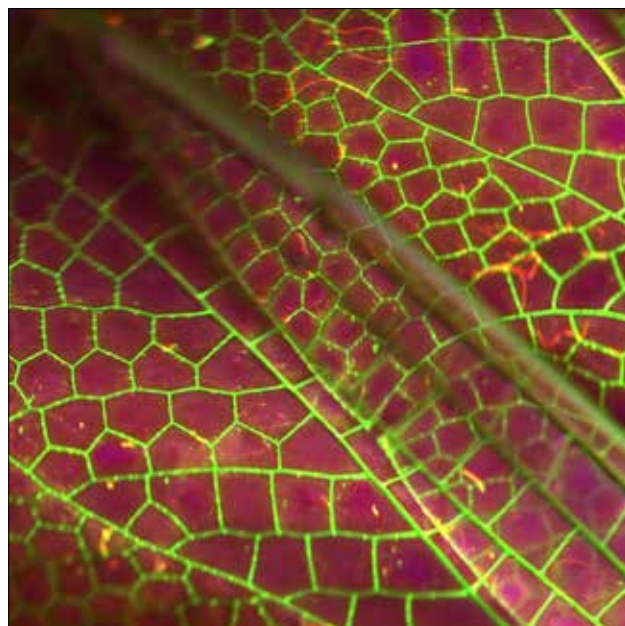
Dragonfly
488nm – 658nm – 784nm – 10micron



Corn
488nm – 658nm – 10micron

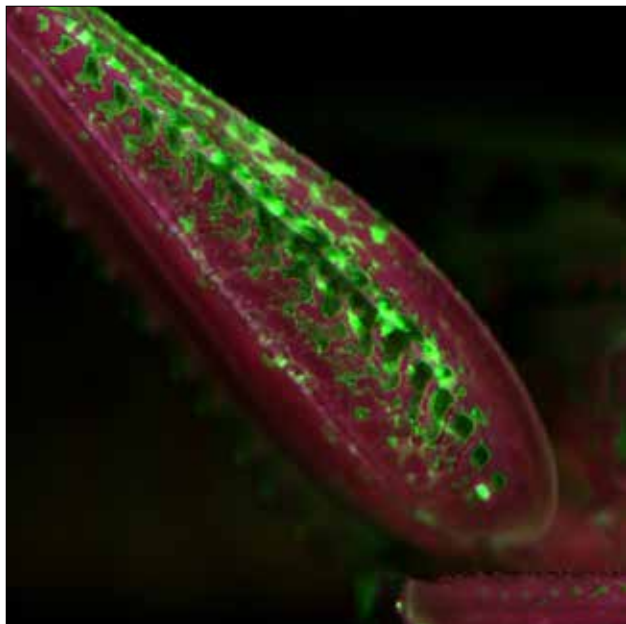


2D Gel Image
Untreated HeLa lysate was labeled with Cy3. Treated HeLa lysate was labeled with Cy5. Samples were simultaneously separated using IEF in the first dimension and SDS-PAGE in the second dimension.

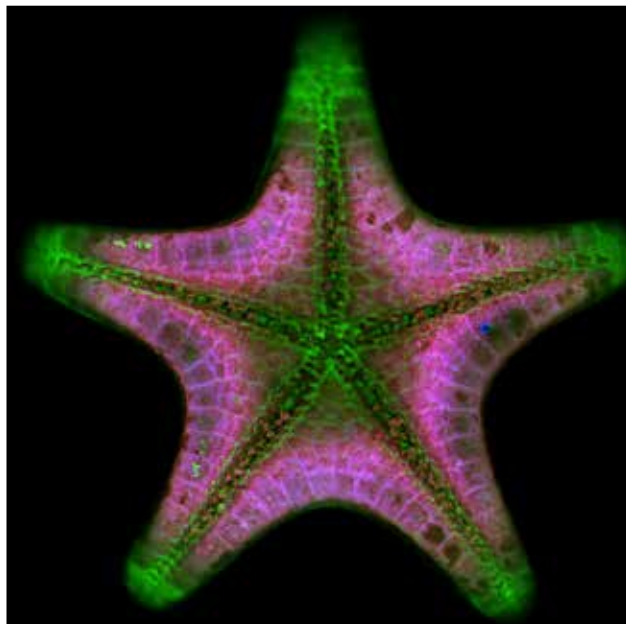


Dragonfly (Zoom)
488nm – 658nm – 784nm – 10micron

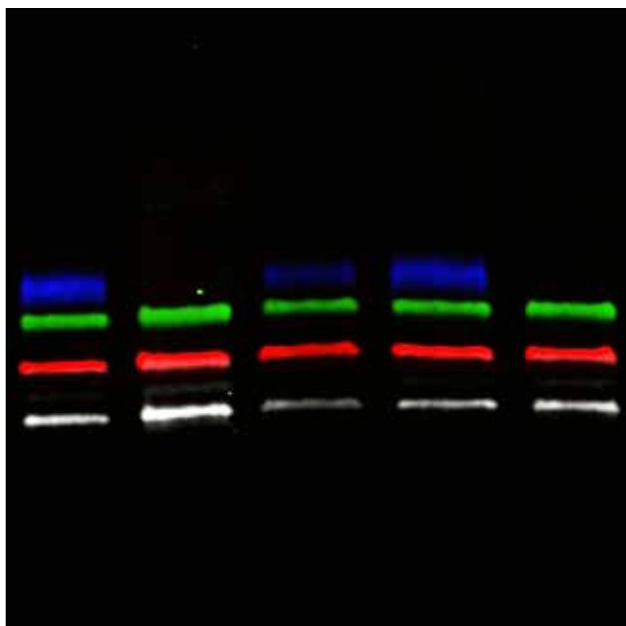
Sapphire™ Biomolecular Imager



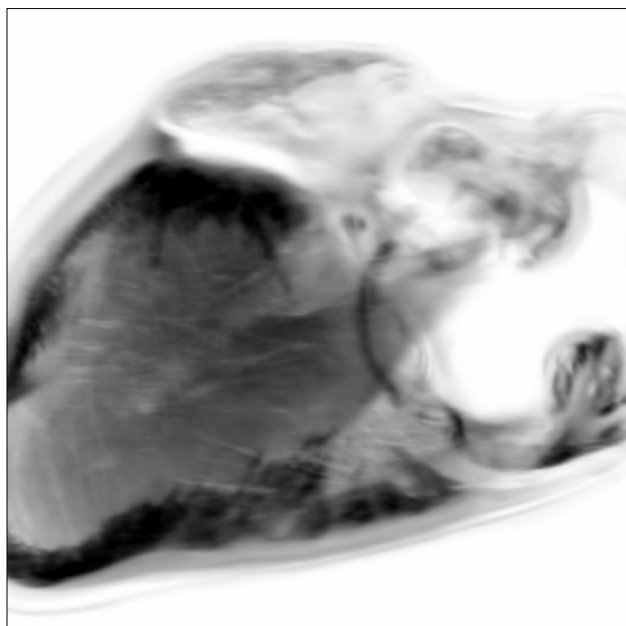
Grasshopper (Zoom)
488nm – 658nm – 784nm – 10micron



Sea Star
488nm – 520nm – 658nm – 784nm – 10micron



Multiplex Fluorescence
Up to 4 different fluorescent probes can be used and imaged at once.



Mouse Heart (Black & White)
658nm – 10micron

cSeries™ Imaging Systems

c600, c500, c400 and c300

Big performance, small footprint, incomparable value

Great science starts with high-quality data, and when it comes to imaging gels, blots, plates, and even intact tissues and small animal models, high-quality data starts with the cSeries.

Leveraging Azure Biosystems' deep expertise in imaging system engineering, the cSeries delivers best-in-class sensitivity, dynamic range, and signal-to-noise ratio in an easy-to-use, compact instrument.

- Get high-quality data from an expertly-engineered system
- Perform a wide range of imaging applications with a single, versatile instrument
- Choose a system for today's needs and upgrade as your detection methodologies change
- Seamlessly integrate the cSeries into your studies with easy-to-use image acquisition and analysis workflows
- Save space with our compact design
- Rest easy with a dedicated team ready to answer questions, troubleshoot, and provide on-site support

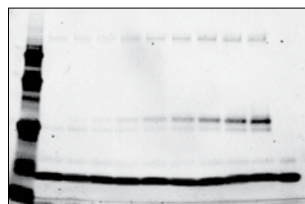


IR FLUORESCENCE, VISIBLE FLUORESCENCE, UV FLUORESCENCE, CHEMILUMINESCENCE VISIBLE IMAGING and BLUE LIGHT EXCITATION

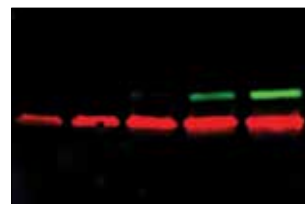
Gels | Blots | Plates | Tissues | Small Animal Models | Plants



In-gel Fluorescence
with GFP and TAMRA



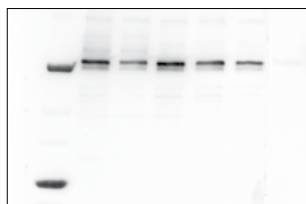
Stain-Free™ Gels



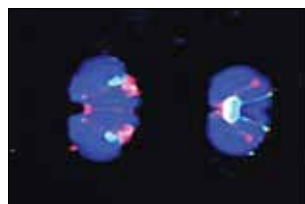
Western Blot with Cy3
and Cy5 Dyes



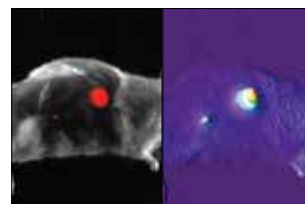
Escherichia coli



Chemiluminescent
Western blot



Mouse brain sections



Mouse with RFP-labeled
subcutaneous tumor



Arabidopsis thaliana

cSeries™ Imaging Systems

Choose Your System



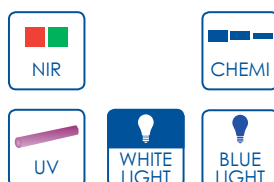
c600

The All-around
Application Ace



c500

The Ultimate IR
Imaging System

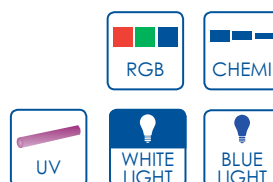


Upgradable to c600



c400

The Visible
Fluorescence Virtuoso



Upgradable to c600



c300

The Darkroom
Eliminator



Upgradable to c400,
c500, and c600

Specifications

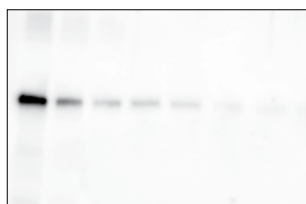
	c600	c500	c400	c300
Part number	AC6001	AC5001	AC4001	AC3001
Excitation sources	Dual wavelength UV transilluminator at 302 nm and 365 nm; EPI blue LEDs at 470 nm; EPI LEDs at 628 nm, 530 nm and 457 nm; laser diodes at 660 nm and 785 nm	Dual wavelength UV transilluminator at 302 nm and 365 nm; EPI blue LEDs at 470 nm; laser diodes at 660 nm and 785 nm	Dual wavelength UV transilluminator at 302 nm and 365 nm; EPI blue LEDs at 470 nm; EPI LEDs at 628 nm, 530 nm and 457 nm	Dual wavelength UV transilluminator at 302 nm and 365 nm; EPI blue LEDs at 470 nm
Filters	7 position motorized filter wheel with 6 filters standard	7 position motorized filter wheel with 3 filters standard	7 position motorized filter wheel with 4 filters standard	7 position motorized filter wheel with 1 filters standard
Detector	8.3 MP CCD camera cooled -50°C below ambient, f/0.95 motorized fixed lens	8.3 MP CCD camera cooled -50°C below ambient, f/0.95 motorized fixed lens	8.3 MP CCD camera cooled -50°C below ambient, f/0.95 motorized fixed lens	8.3 MP CCD camera cooled -50°C below ambient, f/0.95 motorized fixed lens
Bit depth	16-bit	16-bit	16-bit	16-bit

Azure c280

Powerful and Economical Chemiluminescent Imaging

Application Flexibility

- **Picogram Detection of Proteins with Chemiluminescent Westerns**—The Azure cSeries provides accurate and fast chemiluminescent detection, as well as the sensitivity, dynamic range, and linearity needed for quantitative blot analysis. Get the best picture every time, and stop wasting money in the darkroom.
- **“Safe” Dye Detection**—An alternative to ethidium bromide, less-harmful ‘Safe’ dyes can be imaged with the EPI Blue LEDs standard in the system.
- **Protein Analysis**—Protein gels stained with Coomassie blue or silver stain can easily be imaged using the visible light application.
- **Fluorescent Detection for UV**—With a dual wavelength 302nm and 365nm UV transilluminator, images of ethidium bromide-stained DNA gels or Stain-free gels can be captured. An interlock switch prevents the accidental exposure of UV.



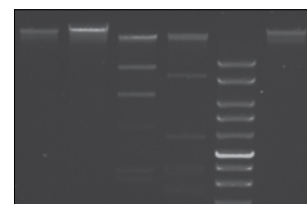
Chemiluminescence



Blue Light Imaging
SYBR® Safe, SYBR® Gold,
SYBR® Green



White Light Imaging
Coomassie Blue, Silver Stain



UV Imaging
Ethidium Bromide

Specifications

Part number

c280

AC2801

Excitation sources

Dual wavelength UV transilluminator at 302 and 365 nm, Orange Tray, White Blot Tray, EPI blue LEDs (470 nm) for gel applications

Filters

7 position motorized filter wheel with 1 filter standard

Detector

6.1 MP CCD camera cooled -50°C below ambient, motorized fixed lens

Bit depth

16-bit

Azure c150 and c200

Gel Imaging Workstations

Application Flexibility

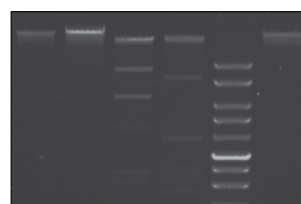
- **“Safe” Dye Detection**—An alternative to ethidium bromide, less-harmful ‘Safe’ dyes can be imaged with the EPI Blue LEDs standard in the system.
- **Protein Analysis**—Protein gels stained with Coomassie blue or silver stain can easily be imaged using the visible light application.
- **Protein Analysis**—Protein gels stained with Coomassie blue or silver stain can easily be imaged using the visible light application.
- **DNA Detection with Ethidium Bromide**—With the a dual-wavelength 302nm and 365nm UV transilluminator, images of ethidium bromide-stained DNA gels can be captured in a fraction of a second. An interlock switch prevents accidental exposure to UV. For band excision, the switch can be overridden with the press of a button, and the UV transilluminator can be pulled out.



Blue Light Imaging
SYBR® Safe, SYBR® Gold,
SYBR® Green



White Light Imaging
Coomassie Blue, Silver Stain



UV Imaging
Ethidium Bromide

Specifications

	c200	c150
Part number	AC2001	AC1501
Excitation sources	Dual wavelength UV transilluminator at 302 and 365 nm, Orange Tray, Black Tray, EPI blue LEDs (470 nm) for gel applications	Dual wavelength UV transilluminator at 302 and 365 nm, Orange Tray, Black Tray, EPI blue LEDs (470 nm) for gel applications
Filters	7 position filter wheel with 1 filter standard	3 position filter slider with 1 filter standard
Detector	5.4 MP image resolution, f/1.8 fixed lens	5.4 MP image resolution, f/1.8 fixed lens
Bit depth	16-bit	16-bit

Software

AzureSpot Analysis Software

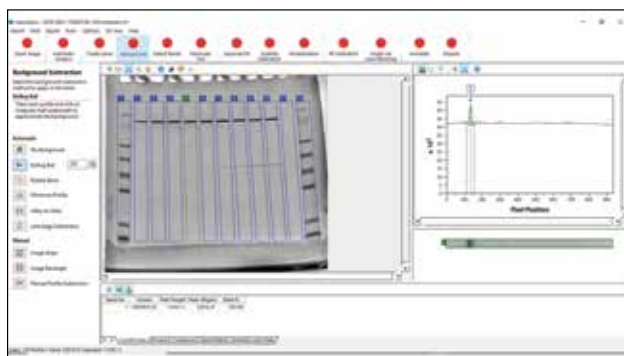
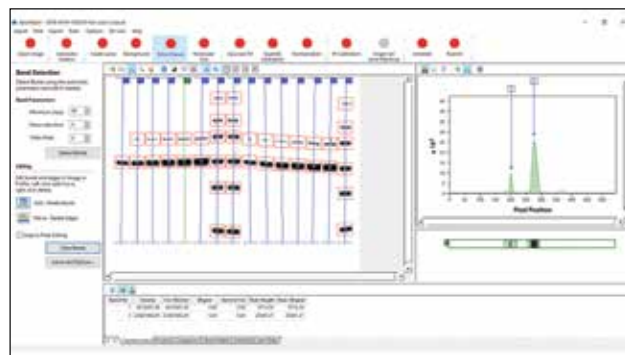
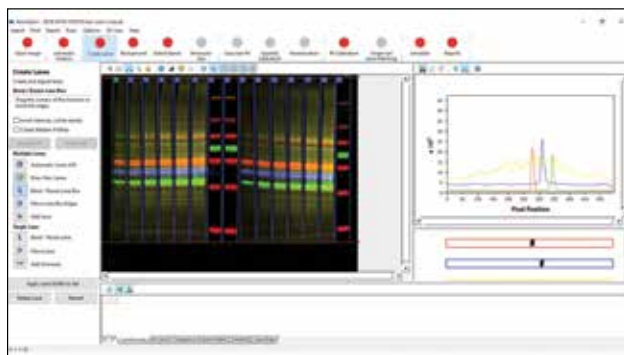
Advanced Analysis for 1D Gels and Blots

AzureSpot helps you interpret your data easily and accurately. Analyze your gels and blots in either manual or automatic modes.

AzureSpot can automatically detect lanes and bands, even on distorted gels, and apply your selected method of background correction.

Visualize intensity plots by lane (sample) and channel (probe) to get detailed information about your proteins of interest.

The integrated tutorial helps you get the most information out of your analyses. Generate a PDF report of your experiment when you are done. You can also export your data in many formats to other applications (e.g. Excel) for further analysis.



Software

AzureSpot can

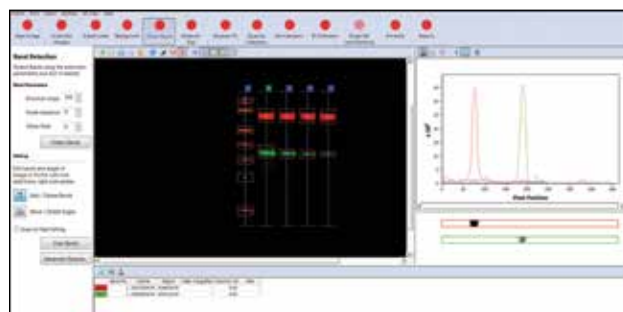
- Perform 1D densitometry
- Automatically detect lanes and bands
- Correct for background
- Calculate molecular weights
- Quantify fluorescent signals
- Annotate your results
- Visualize multiplex analyses
- Count colonies
- Normalize signals on blots
- Analyze arrays and plate-based assays
- Export reports

Product Features

- Integrated tutorial
- PDF report generator
- Lane creation tools
- Molecular size/pl calibration
- Quantity calibration toolbox
- Module for easy shape selection/deselection
- Wide range of data fields to display in measurements
- Annotation tools for comments and highlighting of image
- Various normalization options including housekeeping protein and total protein normalization

Hardware and Software Requirements

- Operating Systems: Windows 10, Windows 8, Windows 7 and Windows Vista
- Processor 1.4 GHz
- Memory Minimum 256MB, recommended 512MB
- Free Hard Disk Space Recommended 5GB



Compatible with both the cSeries and the Sapphire Biomolecular Imager.

Part Number	Name	Description
AC1061	AzureSpot	Single AzureSpot license
AC1062	AzureSpot N1	Unlimited AzureSpot Network license with 1 user at any time
AC1063	AzureSpot N3	Unlimited AzureSpot Network license with up to 3 simultaneous users at any time
AC1064	AzureSpot N5	Unlimited AzureSpot Network license with up to 5 simultaneous users at any time
AC1065	AzureSpot N20	Unlimited AzureSpot Network license with up to 20 simultaneous users at any time

Accessories



Thermal Printer

Digital thermal grayscale USB printer.

Part Number	Name	Description
AC1011	Thermal Printer	Includes USB cable, driver, and one roll of thermal paper



Thermal Paper

One box (4 rolls) High Density Thermal Paper.

Part Number	Name	Description
AC1012	Thermal Paper	Each roll measures 110mm x 21m



UV Safety Glasses/Goggles

For use with UV light or Blue light.

Part Number	Name	Description
AC1022	UV Safety Glasses/Goggles	Recommended accessory for band excision



Screens

Part Number	Name	Description
AC1024	Gel Cutting Screen	UV transmitting plastic that protects the transilluminator glass during band excision from gels
AC1025	Blue Light Conversion Screen	For trans illumination of blue light. Converts UV light to blue light

Accessories



Trays

Part Number	Name	Description
AC1023	Gel Carrying Tray	UV Transmitting Tray with raised edges designed for transporting your sample into the imager (size 9x7 inches)
AC1016	Orange Tray	For setting under Coomassie blue, silver stained, and other colorimetric gels during imaging
AC1017	Black Tray	Black tray designed for optimal blot performance

Computer/Tablet Accessories

Part Number	Name	Description
AC1013	USB Keyboard	USB wireless keyboard compatible with cSeries imager
AC1014	USB Mouse	USB wireless mouse compatible with cSeries imager
AC1015	Stylus	Pointer tip for touch screen compatible with cSeries imager

Sapphire Imaging Accessories

Part Number	Name	Description
IS1010	Sapphire Mat	Designed for flattening membranes against the glass surface
IS1011	Phosphor Screen	Multipurpose screen for ionizing radiation (20 x 25 cm)
IS1012	Cassette for Phosphor Screen	Cassette for the multipurpose screen (20 x 25 cm)



REAGENTS AND CONSUMABLES

REAGENTS AND CONSUMABLES

Blotting Accessories



Transfer to Membrane

Total Protein Detection

Membrane Blocking

Wash Buffers

Chemiluminescent Detection

Fluorescent Detection

Blotting Accessories



Incubation Trays

For staining and washing gels and membranes

These specially designed incubation trays are ideal for staining and washing electrophoresis gels and membranes. Available in a range of sizes in both clear and opaque.

Features

- **Lidded**—to protect experiments from dust or debris
- **Non-binding**—surfaces treated with silicone to prevent antibody loss
- **Convenient**—multiple sizes available for different applications
- **Opaque or clear**—opaque trays are ideal for dealing with light sensitive fluorescent blots

Part Number	Name	Description	Size
AC2120	Incubation Tray – 7x5cm (opaque black top and bottom)	For staining and washing light sensitive gels and membranes	5 trays
AC2121	Incubation Tray – 9x6cm (opaque black top and bottom)	For staining and washing light sensitive gels and membranes	4 trays
AC2122	Incubation Tray – 11x9cm (opaque black top and bottom)	For staining and washing light sensitive gels and membranes	3 trays
AC2123	Incubation Tray – 15.5x10.5cm (opaque black top and bottom)	For staining and washing light sensitive gels and membranes	2 trays
AC2150	Incubation Tray – 7x5cm (clear)	For staining and washing gels and membranes	5 trays
AC2151	Incubation Tray – 9x6cm (clear)	For staining and washing gels and membranes	4 trays
AC2152	Incubation Tray – 11x9cm (clear)	For staining and washing gels and membranes	3 trays
AC2153	Incubation Tray – 15.5x10.5cm (clear)	For staining and washing gels and membranes	2 trays

Blotting Accessories



Background Quenching Sheets

Background quenching sheets for use with fluorescent or chemiluminescent samples

Use these quenching sheets under your blot when imaging chemiluminescent or fluorescent Westerns. The sheets reduce background due to contamination or auto-fluorescence, improving the quality of your image.

Part Number	Name	Description	Size
AC2144	Quenching Sheets – 9x12.5cm	Background quenching sheets for use with fluorescent or chemiluminescent samples	10 sheets

Blotting Accessories



Blot Development Folders

Transparent plastic sheets to hold blots for imaging

A wrinkle-free alternative to plastic wrap, these transparent plastic folders hold your blot during handling and imaging and help maximize the signal longevity of Radiance and Radiance Plus Substrates.

Part Number	Name	Description	Size
AC2126	Blot Development Folders	Transparent plastic sheets to hold blots for imaging – alternative to plastic wraps	100 sheets

REAGENTS AND CONSUMABLES

Blotting Accessories

Transfer to Membrane

Total Protein Detection

Membrane Blocking

Wash Buffers

Chemiluminescent Detection

Fluorescent Detection



Transfer to Membrane



Pre-cut Membranes

Pre-cut PVDF membranes for a variety of Western blotting applications save you time in the lab.

Features

- **Performance**—quality-controlled for background-free Westerns
- **Convenience**—save time, and avoid concerns about membrane contamination
- **Flexibility**—available in PVDF and nitrocellulose, choose the right membrane for your application

PVDF pre-cut membranes for Western blotting applications

Low-fluorescence PVDF membranes reduce background noise for improved sensitivity. Available in three different pre-cut sizes.

Nitrocellulose pre-cut membranes for Western blotting applications

Low-fluorescence Nitrocellulose membranes are available in both 0.45 μm and 0.22 μm pore sizes to accommodate larger and smaller proteins, respectively.

PVDF

- High binding capacity is great for low expressing proteins
- Typically used for fluorescence
- High protein retention for stripping and reprobing

Nitrocellulose

- Low molecular weight proteins
- Typically used for chemi
- Not ideal for stripping

Part Number	Name	Description	Size
AC2105	Low Fluorescence Western Membrane (PVDF) 0.45 μm	Pre-cut 9x7 cm	10 sheets
AC2108	Low Fluorescence Western Membrane (PVDF) 0.45 μm	Pre-cut 10x15 cm	10 sheets
AC2109	Low Fluorescence Western Membrane (PVDF) 0.45 μm	Pre-cut 13x18 cm vertical gels	10 sheets
AC2106	Nitrocellulose Transfer Membrane 0.45 μm	Pre-cut 8x10 cm	10 sheets
AC2107	Nitrocellulose Transfer Membrane 0.22 μm	Pre-cut 8x10 cm	10 sheets

Transfer to Membrane



Blotting Paper for Western Blotting

Pre-cut blotting paper for Western blot transfer

Pre-cut blotting papers save time and reduce waste for the easiest Western blotting workflow. Forget about measuring and cutting blotting paper to the size of your mini-gels. Use these pre-cut papers to assemble your transfer “sandwiches”.

Blotting papers are cut to completely cover the gels and membranes.

- **For 8x10cm gels**—blotting papers are 9x13cm
- **For 7x9cm gels**—blotting papers are 8x10cm

Part Number	Name	Description	Size
AC2110	Blotting Paper for Western Blotting	Pre-cut blotting paper for Western blot transfer—7x9 cm vertical gels	60 sheets
AC2111	Blotting Paper for Western Blotting	Pre-cut blotting paper for Western blot transfer—8x10 cm vertical gels	60 sheets

Transfer to Membrane



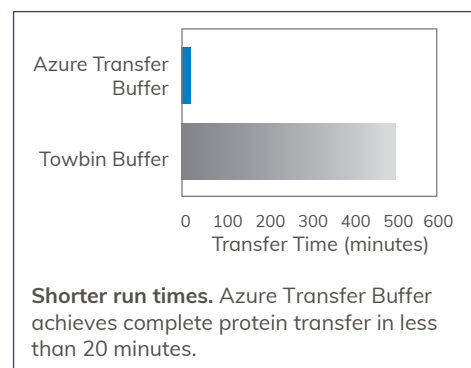
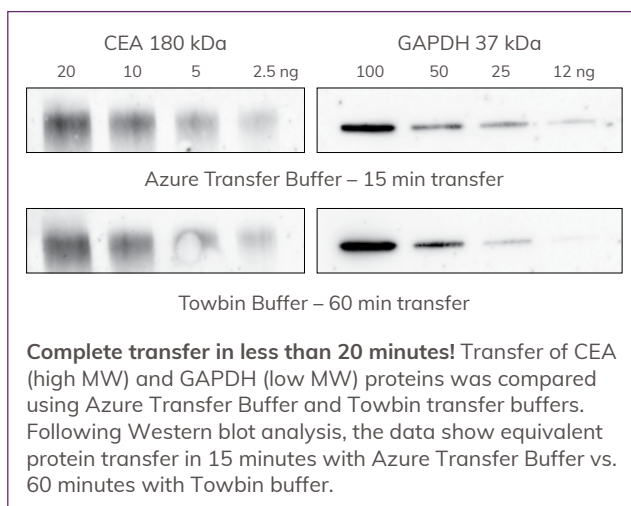
Azure Transfer Buffer

Enhanced protein transfer for improved sensitivity

Azure's proprietary transfer buffer provides improved detection of low-abundance and post-translationally modified proteins. High-efficiency protein transfer and increased protein retention on the membrane add up to more sensitive Western blots.

Features

- **High performance**—increased protein retention on the membrane and fast transfer times result in more sensitive detection of low-abundance and post-translationally modified proteins
- **Efficient**—enhanced transfer efficiency for proteins of all sizes
- **Fast**—transfer proteins in less than 20 minutes vs. several hours required with traditional transfer buffers
- **Convenient**—use your existing wet transfer electrophoresis apparatus



Part Number	Name	Description	Size
AC2127	Azure Transfer Buffer	50x concentrated solution sufficient for 50-100 blots	500 ml

REAGENTS AND CONSUMABLES

Blotting Accessories

Transfer to Membrane

Total Protein Detection

Membrane Blocking

Wash Buffers

Chemiluminescent Detection

Fluorescent Detection



Total Protein Detection



Azure Ponceau Stain

Quick total protein stain for membranes

Azure Ponceau detects total protein on nitrocellulose and PVDF membranes, allowing you to check the quality of protein transfer before proceeding with Western blotting. Use Azure Ponceau Stain to quickly make sure that protein transfer has been even across the entire blot, and that no bubbles or other transfer artifacts are present. The staining is reversible and after destaining, membranes can immediately be used for Western blotting.

Features

- **Quick**—protein staining is complete in 5 minutes or less
- **Reversible**—easily destain membrane with water
- **Compatible**—after destaining, PVDF and nitrocellulose membranes are ready for Western blotting

Part Number	Name	Description	Size
AC2125	Azure Ponceau Stain	Visible reversible total protein stain for proteins transferred to membrane—sufficient for staining 50 blots 9x7 cm	500 ml

Total Protein Detection

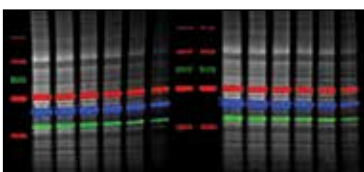


AzureRed Fluorescent Protein Stain

Quantitative fluorescent total protein stain

Features

- **Sensitive**—detect less than a nanogram of protein per spot
- **Convenient**—simple 30 minute protocol for blots or 3 hour protocol for gels
- **Flexible**—stain gels or membranes
- **Reversible**—destain for downstream Western blotting or mass spectrometry
- **No speckling**—clean background and no speckling for better data
- **Safe**—biodegradable and contains no heavy metals for increased safety and simple disposal
- **Compatible**—image stained blots or gels with laser or CCD imaging systems. Multiplex stained membranes with fluorescent Western blots for simultaneous detection of total protein and proteins of interest.



A membrane was stained with AzureRed and probed for three proteins. The resulting fluorescent Western blot was scanned on a Sapphire Biomolecular Imager to detect all three proteins and the total protein stain simultaneously.

Total protein normalization

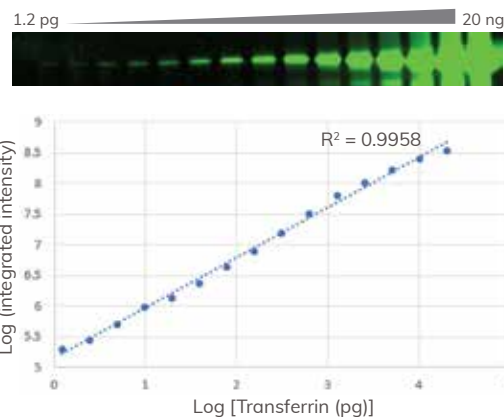
Use AzureRed as a fluorescent total protein normalization stain. The 30 minute protocol produces superior linearity, sensitivity and reproducibility and is compatible with multiplex fluorescent Western blotting.

Stain 1D and 2D gels

AzureRed stains 1D and 2D gels in less than 3 hours, with high sensitivity, low background, and no speckling.



High sensitivity, fast protocol. AzureRed outperforms both Coomassie blue and SYPRO® Ruby in time and sensitivity. Gels were stained with AzureRed, SYPRO Ruby, or Coomassie blue stain, according to the manufacturers' protocols and imaged on a CCD imager.



Quantitative staining with AzureRed. Gel containing a serial dilution of transferrin was stained with AzureRed and imaged with the 520nm channel of the Sapphire Biomolecular Imager. Less than 2pg of protein per band can be detected, and the signal is linear over more than 4 orders of magnitude.

Part Number	Name	Description	Size
AC2124	AzureRed Fluorescent Protein Stain	Fluorescent total protein stain for 1D and 2D gels – sufficient for 20 minigels	5ml



REAGENTS AND CONSUMABLES

Blotting Accessories

Transfer to Membrane

Total Protein Detection

Membrane Blocking

Wash Buffers

Chemiluminescent Detection

Fluorescent Detection



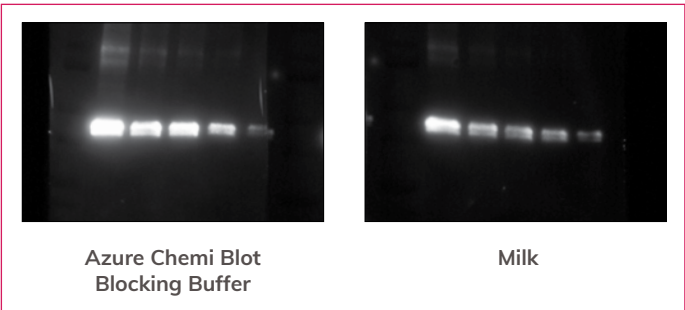
Membrane Blocking



Azure Chemi Blot Blocking Buffer

Ready-to-use block that enhances chemiluminescent signal

Azure Chemi Blot Blocking Buffer was formulated specifically for chemiluminescent Western blots to enhance signal and lower background. The 1X formula comes ready-to-use with no mixing or dilutions required.



Part Number	Name	Description	Size
AC2148	Azure Chemi Blot Blocking Buffer	Provided as a 1x Ready-to-Use Solution	500mL

Membrane Blocking



Azure Protein-Free Blot Blocking Buffer

Protein-Free Solution for Fluorescent Immunoblots

Azure Protein-Free Blot Blocking Buffer is a protein-free blocking solution optimized for fluorescent Western blots. It also serves as an excellent blocking reagent for chemiluminescent Western blotting.

Azure Protein-Free Blot Blocking Buffer can reduce background when used with primary antibodies that have a high degree of cross-reactivity with protein blockers such as BSA, casein or milk protein.

Part Number	Name	Description	Size
AC2112	Azure Protein-Free Blot Blocking Buffer	Provided as a 5x solution	200mL

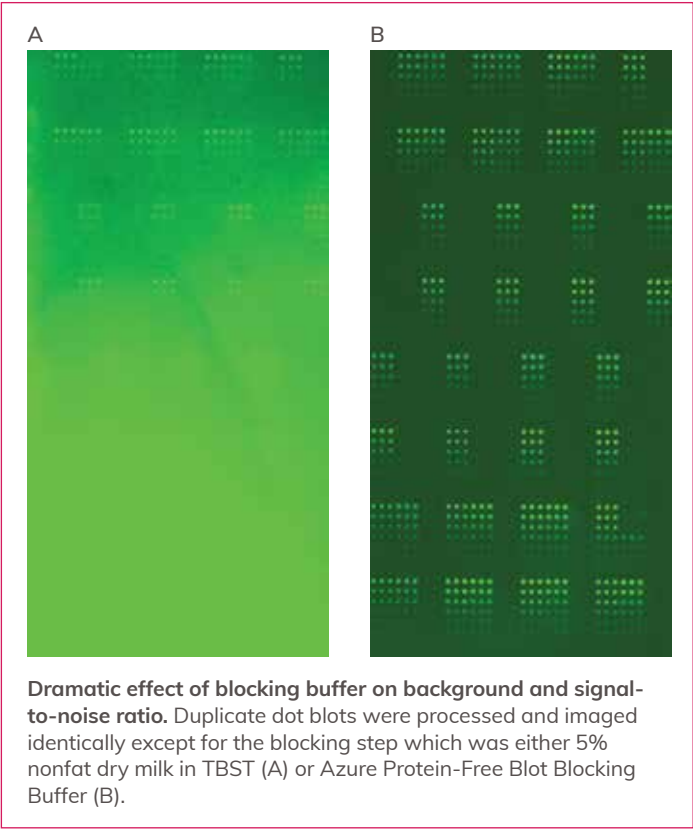
Membrane Blocking



Azure Fluorescent Blot Blocking Buffer

Ready-to-use block that stabilizes fluorescent signal

Azure Fluorescent Blot Blocking Buffer is optimized for use with Azure's fluorescent Western blotting systems. The 1x solution is ready-to-use and formulated to lower background noise and stabilize fluorescent signal.



Part Number	Name	Description	Size
AC2190	Azure Fluorescent Blot Blocking Buffer	Provided as a 1x Ready-to-Use Solution	500mL

REAGENTS AND CONSUMABLES

Blotting Accessories

Transfer to Membrane

Total Protein Detection

Membrane Blocking

Wash Buffers

Chemiluminescent Detection

Fluorescent Detection



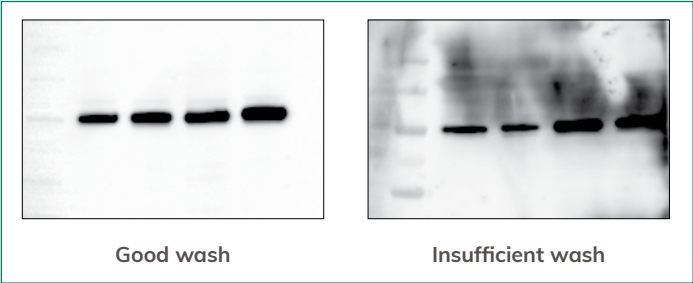
Wash Buffers



Azure Blot Washing Buffer

One wash for any Western blotting system

Azure Blot Washing Buffer can be used with any Western blotting system, including all chemiluminescent and visible fluorescent Western blotting kits. Provided as a 10x concentrate.



Part Number	Name	Description	Size
AC2113	Azure Blot Washing Buffer	Provided as a 10x concentrated solution	500mL

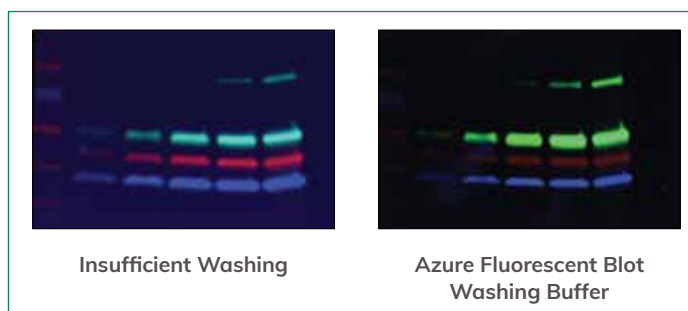
Wash Buffers



Azure Fluorescent Blot Washing Buffer

Washing buffer optimized for use with fluorescent secondary antibodies

Optimized for use with both visible and near-infrared fluorescent Western blots, Azure's Fluorescent Blot Washing Buffer is specially formulated to reduce non-specific binding of fluorescent secondary antibodies to produce clean blots with high signal-to-noise ratios.



Part Number	Name	Description	Size
AC2145	Azure Fluorescent Blot Washing Buffer	Provided as a 10x solution	500mL



REAGENTS AND CONSUMABLES

Blotting Accessories

Transfer to Membrane

Total Protein Detection

Membrane Blocking

Wash Buffers

Chemiluminescent Detection

Fluorescent Detection



Chemiluminescent Detection



HRP-conjugated Secondary Antibodies

For chemiluminescent immunodetection

Azure's high-quality HRP-conjugated secondary antibodies offer unparalleled sensitivity and performance for immunoblotting and ELISA applications. These secondary HRP conjugated antibodies are optimized to work with Azure's Radiance and Radiance Plus protein detection systems.

Part Number	Name		Size
AC2114	Goat-anti-rabbit HRP secondary antibody	HRP conjugated secondary antibody for chemiluminescent Westerns	500 µl
AC2115	Goat-anti-mouse HRP secondary antibody	HRP conjugated secondary antibody for chemiluminescent Westerns	500 µl
AC2116	Goat-anti-human HRP secondary antibody	HRP conjugated secondary antibody for chemiluminescent Westerns	500 µl
AC2117	Goat-anti-chicken HRP secondary antibody	HRP conjugated secondary antibody for chemiluminescent Westerns	500 µl
AC2118	Goat-anti-rat HRP secondary antibody	HRP conjugated secondary antibody for chemiluminescent Westerns	500 µl
AC2119	Goat-anti-guinea pig HRP secondary antibody	HRP conjugated secondary antibody for chemiluminescent Westerns	500 µl
AC2149	Donkey-anti-goat HRP secondary antibody	HRP conjugated secondary antibody for chemiluminescent Westerns	500 µl

Chemiluminescent Detection



Azure ChemiWriter ECL

Chemiluminescent pen for blot annotation

A chemiluminescent marker that enables you to write or draw on your transfer membranes, resulting in a chemiluminescent signal on your markings once substrate is added.

Tips

- The ChemiWriter ink contains a reagent that reacts with HRP substrates to produce chemiluminescence and also a blue dye to allow you to see markings as you write on the blot.
- There are two heads to the pen, a fine point tip and a thicker chisel point tip. We recommend using the fine point tip to annotate the blot and mark protein ladders for detection.
- The chisel point of the pen can be used to deposit an increased amount of reagent on the blot for more intense signal.
- For best results we recommend annotating your blot after transfer and before starting your Western blotting protocol.
- Once annotated, the blot may be stored dry or wet, refrigerated or at room temperature. The Azure ChemiWriter ECL reagent and blue ink markings on the blot are stable for at least 3 months.
- The ChemiWriter should be stored tightly closed at room temperature.

Part Number	Name	Description	Size
AC2146	Azure ChemiWriter ECL	Chemiluminescent pen for blot annotation	1 pen

Chemiluminescent Detection



Radiance Substrates

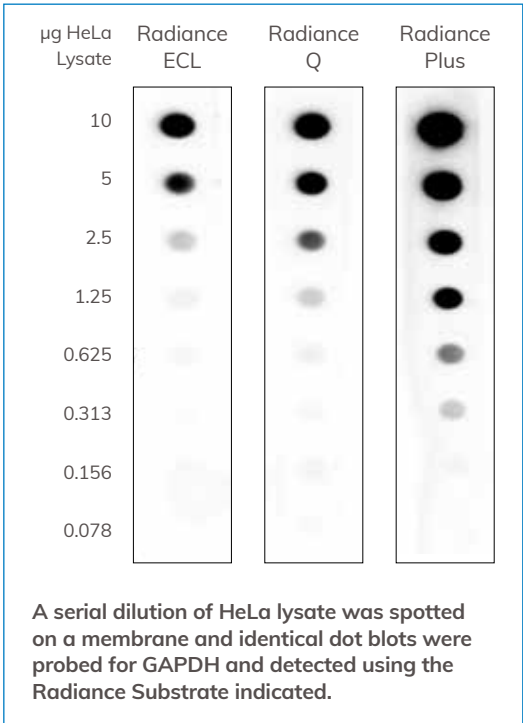
Specialized chemiluminescent HRP substrates for CCD imaging

Radiance chemiluminescent horseradish peroxidase (HRP) substrates are specially formulated for CCD imaging and to provide excellent performance with Azure's cSeries imaging systems. Radiance substrates produce strong, long-lasting signal that is linear with respect to protein load.

Which substrate is right for you?



Radiance ECL	Radiance Q	Radiance Plus
<ul style="list-style-type: none">• Economical• Linear signal for quantitative Westerns	<ul style="list-style-type: none">• Higher linear dynamic range for more reliable quantitation• Increased sensitivity• Extended signal longevity	<ul style="list-style-type: none">• Ultra-high sensitivity for low abundance proteins



Chemiluminescent Detection



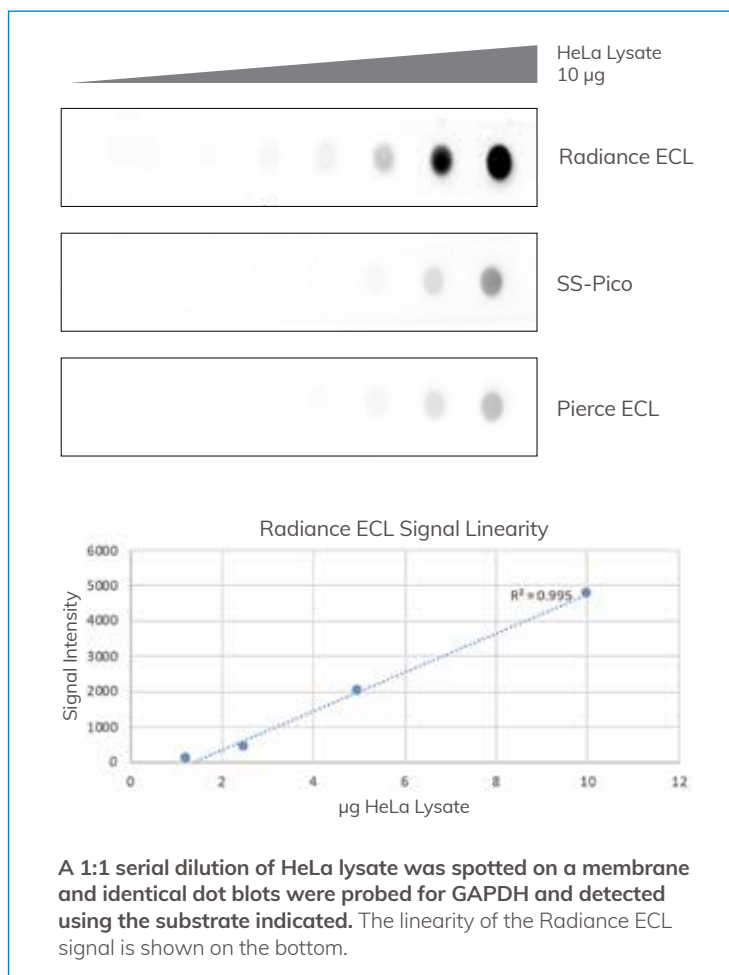
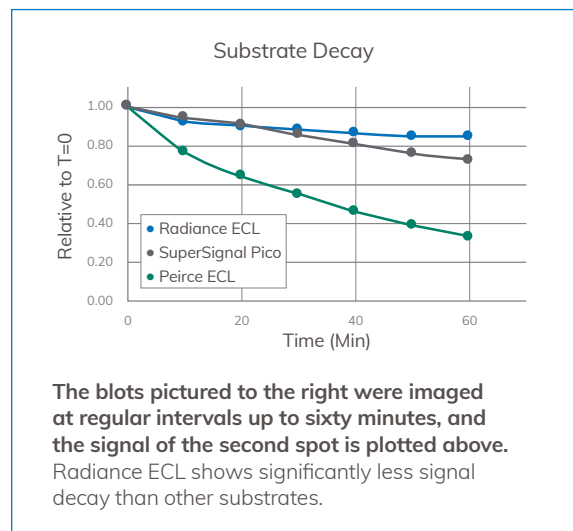
Radiance ECL Substrate

Chemiluminescent HRP substrate

Radiance ECL is an enhanced chemiluminescent substrate specially developed for routine Western blotting. The strong signal and low background produces cleaner blots, allowing for more meaningful quantitative comparisons.

Features

- Economical – well-suited for routine Western blotting
- Linear signal for more meaningful quantitative comparisons
- Long lasting signal



Part Number	Name	Name	Size
AC2204	Radiance ECL	Enhanced Chemiluminescent HRP Substrate	500mL

Chemiluminescent Detection

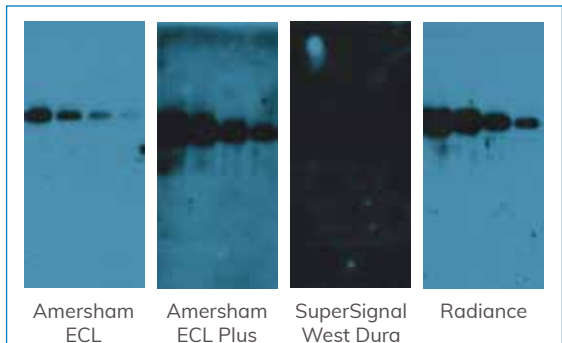


Radiance Q Substrate

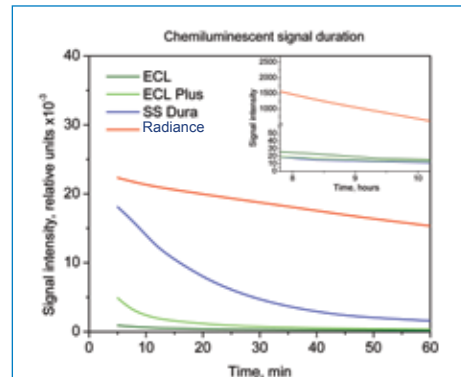
Chemiluminescent substrate for quantitative chemiluminescent Westerns

Radiance chemiluminescent substrate is specially designed for sensitive detection on CCD based systems. It provides the fastest, most sensitive, most quantitative chemiluminescent Western blots.

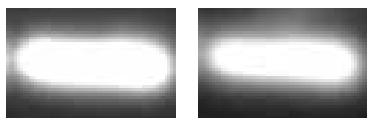
Radiance chemiluminescent substrate is specially formulated for CCD imaging. This novel horseradish peroxidase (HRP) substrate provides a strong, long-lasting signal, the broadest useful linear range, and high sensitivity for the most quantitative chemiluminescent Western assays.



Low background for broad useful linear dynamic range. Extremely low background with Radiance. Replicate Western blots were developed using Radiance or one of three other chemiluminescent substrates. After a simultaneous 20 minute exposure to the same piece of film, Radiance displays the best combination of sensitivity and signal with low background. All display parameters are identical across all images shown in this figure.



Signal that endures. Radiance produces the most stable chemiluminescent signal. Blots detected using Radiance or one of three other chemiluminescent substrates were re-imaged at several times over a 10 hour period. The intensity of one band is plotted. 60 minutes after substrate incubation, Radiance retains 70% of its initial signal strength, while the competition decays to 5% or less. Enjoy more flexibility in imaging blots, knowing the signal will not decay substantially over several hours. Also, long exposures can be conducted if needed to detect very low abundance bands.



5 min
2 min exposure after
substrate incubation

60 min
2 min exposure after
substrate incubation

Long-lasting signal. Radiance allows blots to be imaged several hours after substrate incubation. Blots can be re-imaged to obtain the perfect exposure, without worrying about signal decay. A blot was imaged with 2 min exposures at 5 min and 60 min after substrate incubation.

Part Number	Name	Description	Size
AC2101	Radiance Q	HRP Substrate for CCD Imaging – contains substrate for 1500 cm ² membrane	150ml

Chemiluminescent Detection



Radiance Plus Substrate

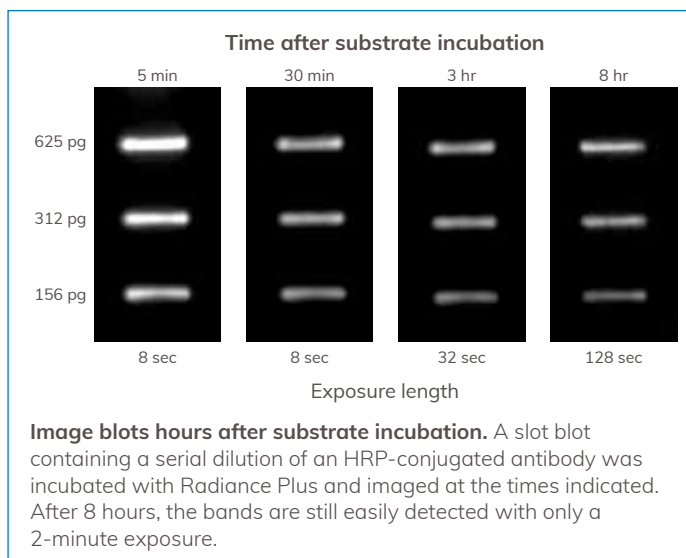
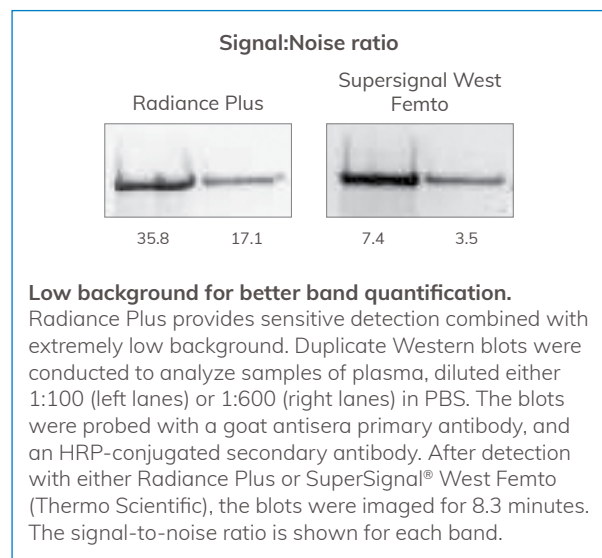
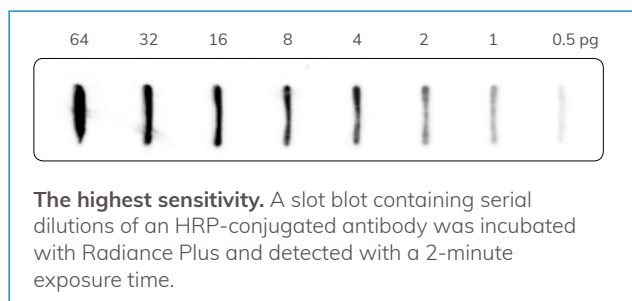
Chemiluminescent substrate for the most sensitive Western blotting experiments

Radiance Plus is designed for sensitive detection and low antibody concentrations. With low background and a strong, long-lasting chemiluminescent and chemifluorescent signal, Radiance Plus is the best choice for quantifying low-abundance bands.

Radiance Plus is the most sensitive HRP substrate available from Azure for chemiluminescent Western blotting. With attomole sensitivity and a long-lasting signal, Radiance Plus allows you to detect bands not visualized with other substrates. High signal-to-noise and a large dynamic range make it ideal for quantifying low-intensity bands.

Features

- Detect low-abundance proteins
- Low background for high signal-to-noise ratio
- Long-lasting signal



Part Number	Name	Description	Size
AC2103	Radiance Plus	Femtogram-sensitivity HRP Substrate – contains substrate for 1500 cm ² membrane	150ml

Chemiluminescent Detection



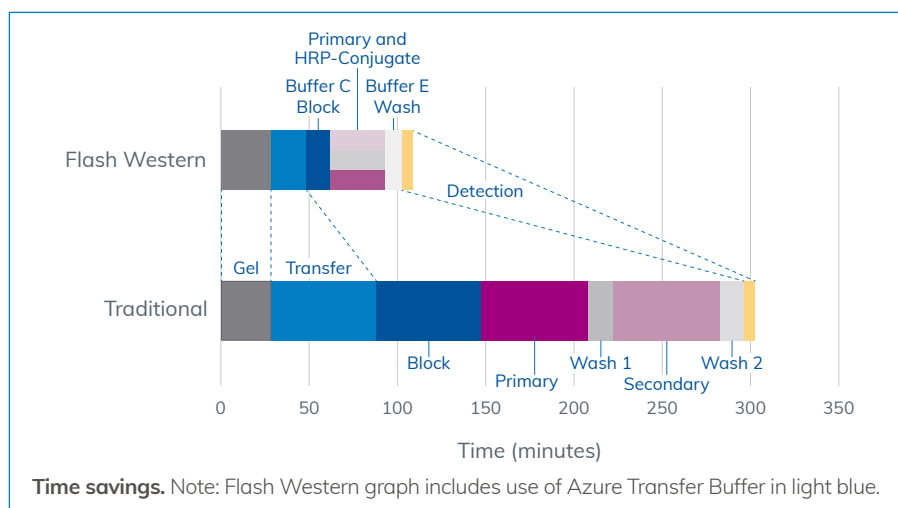
Azure Flash Western Chemiluminescence Kit

Run an entire Western Blot from gel through imaging in just 2 hours

The Azure Flash Western Kit uses a proprietary set of reagents to achieve complete membrane blocking, rapid hybridization of antibodies, and enhancement of chemi signal in less than an hour of blotting time. Combine with Azure Transfer Buffer (AC2127) to cut wet transfer time down to 15- to 30-minutes for a total assay time of two hours from gel to imaging.

Features

- Fast protocol with few hands-on steps
- Antibody stabilization for enhanced chemi signal
- Low background and increased signal-to-noise ratios
- Increased detection sensitivity and linear dynamic range



Antibody	Sample Type	Azure Flash Western (1 hr)	Traditional Western (6 hrs)
STAT-3	Untreated HeLa		
pSTAT-3	IFNα HeLa		
HSP60	Untreated HeLa		

Rapid protocol with low background and high sensitivity.

Replicate Western blots were performed using the Azure Flash Western Chemiluminescence Kit and a traditional Western blot protocol. Each blot shows a dilution series of the same sample. The Azure Flash Western Kit produced more sensitive detection than the traditional protocol with over 90% of antibodies (while STAT-3 and pSTAT-3 demonstrate the improved data quality possible with the Azure Flash Western Kit, the HSP60 antibody is an example of an antibody with similar performance).

Part Number	Name	Size
AC2220	Azure Flash Western Chemiluminescence Kit, Rabbit	1 Kit
AC2221	Azure Flash Western Chemiluminescence Kit, Mouse	1 Kit

Each Flash Western Chemiluminescence Kit contains enough materials to perform ten chemiluminescent Western blots and includes PVDF membranes, Blocking Buffer, Flash HRP-conjugate, Flash Wash Buffer, and Radiance ECL Substrate.

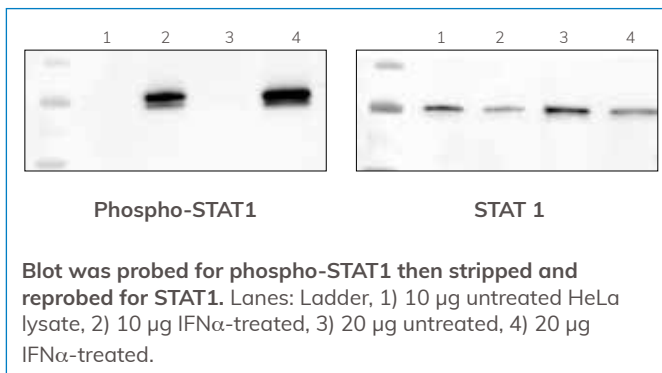
Chemiluminescent Detection



HRP Stripping Buffer

Stripping Buffer for chemiluminescent Western blots

Uniformly removes antibodies from developed HRP Western blots so the blot can be reprobed with another set of antibodies.



Part Number	Name	Size
AC2154	HRP Stripping Buffer	500mL



REAGENTS AND CONSUMABLES

Blotting Accessories

Transfer to Membrane

Total Protein Detection

Membrane Blocking

Wash Buffers

Chemiluminescent Detection

Fluorescent Detection



Fluorescent Detection



AzureSpectra Fluorescent Secondary Antibodies

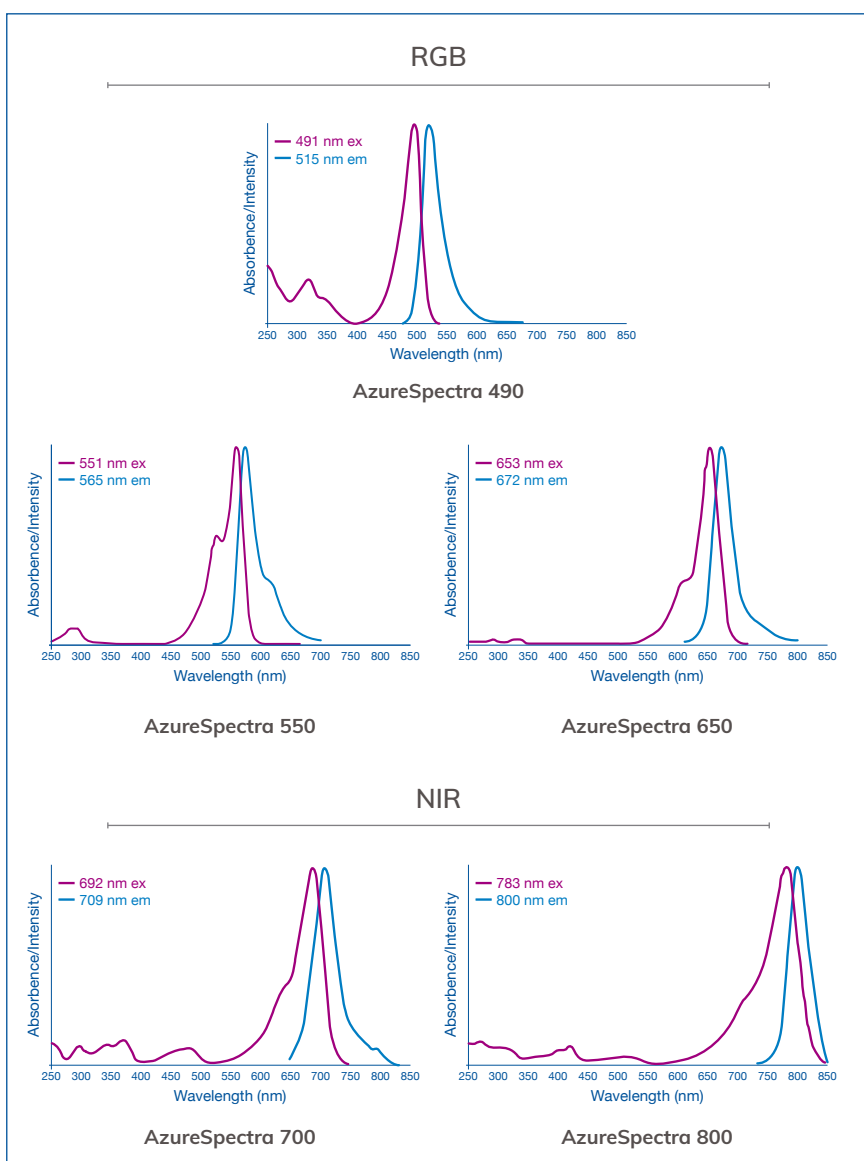
Visible and Near-IR Fluorescently Labeled Secondary Antibodies

Azure offers secondary antibodies labeled with fluorophores that emit light in visible and near-infrared wavelengths. AzureSpectra 490, 550, 650, 700 and 800 secondary antibodies offer unparalleled sensitivity and performance for immunoblotting applications when used in conjunction with Azure's Western blotting systems.



AzureSpectra 490
anti-Transferrin (directly labeled)
AzureSpectra 550
goat anti-rat, Tubulin
AzureSpectra 700
goat anti-rabbit, beta-Actin
AzureSpectra 800
goat anti-chicken, GAPDH

	Excitation max. (nm)	Emission max. (nm)
● Dye-490	491	515
● Dye-550	551	565
● Dye-650	653	672
● Dye-IR700	692	709
● Dye-IR800	783	800



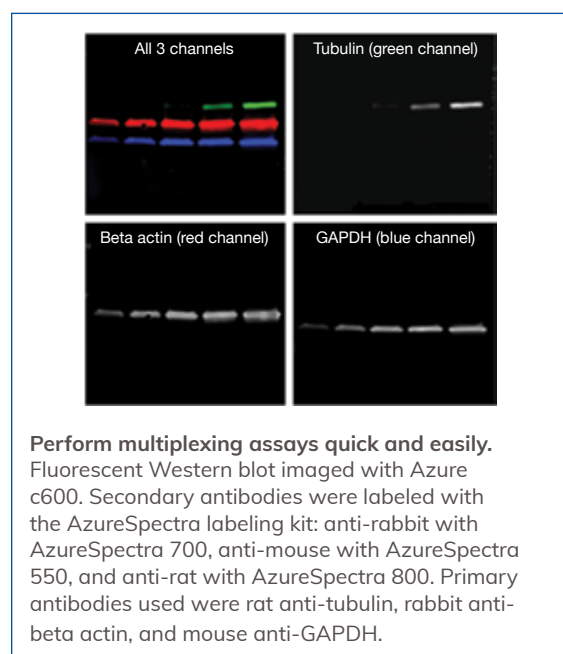
Fluorescent Detection

Part Number	Name		Size
AC2206	AzureSpectra 490	Goat-anti-rabbit secondary antibody	250mg
AC2207	AzureSpectra 490	Goat-anti-mouse secondary antibody	250mg
AC2208	AzureSpectra 490	Goat-anti-human secondary antibody	250mg
AC2209	AzureSpectra 490	Goat-anti-chicken secondary antibody	250mg
AC2210	AzureSpectra 490	Goat-anti-rat secondary antibody	250mg
AC2211	AzureSpectra 490	Goat-anti-guinea pig secondary antibody	250mg
AC2217	AzureSpectra 490	Donkey-anti-goat secondary antibody	250mg
AC2158	AzureSpectra 550	Goat-anti-rabbit secondary antibody	250mg
AC2159	AzureSpectra 550	Goat-anti-mouse secondary antibody	250mg
AC2160	AzureSpectra 550	Goat-anti-human secondary antibody	250mg
AC2161	AzureSpectra 550	Goat-anti-chicken secondary antibody	250mg
AC2162	AzureSpectra 550	Goat-anti-rat secondary antibody	250mg
AC2163	AzureSpectra 550	Goat-anti-guinea pig secondary antibody	250mg
AC2164	AzureSpectra 550	Donkey-anti-goat secondary antibody	250mg
AC2165	AzureSpectra 650	Goat-anti-rabbit secondary antibody	250mg
AC2166	AzureSpectra 650	Goat-anti-mouse secondary antibody	250mg
AC2167	AzureSpectra 650	Goat-anti-human secondary antibody	250mg
AC2168	AzureSpectra 650	Goat-anti-chicken secondary antibody	250mg
AC2169	AzureSpectra 650	Goat-anti-rat secondary antibody	250mg
AC2170	AzureSpectra 650	Goat-anti-guinea pig secondary antibody	250mg
AC2171	AzureSpectra 650	Donkey-anti-goat secondary antibody	250mg
AC2128	AzureSpectra 700	Goat-anti-rabbit secondary antibody	250mg
AC2129	AzureSpectra 700	Goat-anti-mouse secondary antibody	250mg
AC2130	AzureSpectra 700	Goat-anti-human secondary antibody	250mg
AC2131	AzureSpectra 700	Goat-anti-chicken secondary antibody	250mg
AC2132	AzureSpectra 700	Goat-anti-rat secondary antibody	250mg
AC2133	AzureSpectra 700	Goat-anti-guinea pig secondary antibody	250mg
AC2156	AzureSpectra 700	Donkey-anti-goat secondary antibody	250mg
AC2134	AzureSpectra 800	Goat-anti-rabbit secondary antibody	250mg
AC2135	AzureSpectra 800	Goat-anti-mouse secondary antibody	250mg
AC2136	AzureSpectra 800	Goat-anti-human secondary antibody	250mg
AC2137	AzureSpectra 800	Goat-anti-chicken secondary antibody	250mg
AC2138	AzureSpectra 800	Goat-anti-rat secondary antibody	250mg
AC2139	AzureSpectra 800	Goat-anti-guinea pig secondary antibody	250mg
AC2157	AzureSpectra 800	Donkey-anti-goat secondary antibody	250mg

Fluorescent Detection



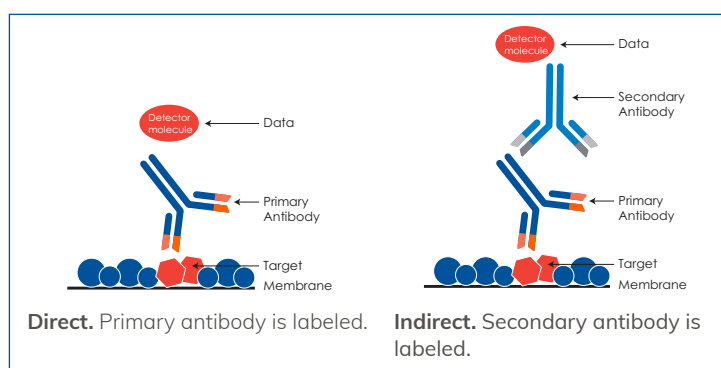
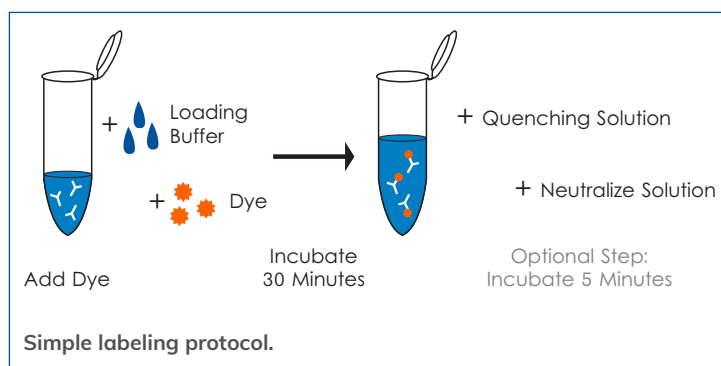
	Excitation max. (nm)	Emission max. (nm)
● Dye-490	491	515
● Dye-550	551	565
● Dye-650	653	672
● Dye-IR700	692	709
● Dye-IR800	783	800



AzureSpectra Labeling Kits

Fast and simple antibody labeling

- **Easy and fast**—The fluorescent antibody labeling kit provides the materials necessary to fluorescently label the antibody of your choice in less than 1 hour
- **Label primary antibodies**—use antibodies that your lab has already validated and optimized. Labeled primary antibodies can then be used for direct Westerns.
- **Label secondary antibodies**—secondary antibodies can be labeled for traditional indirect Western blot applications
- **Choose from 5 dyes**—the non-overlapping emission spectra of the fluorophores available for labeling means you can easily perform multiplexing



Part Number	Name	Description	Size
AC2185	AzureSpectra Labeling Kit – 490	Each kit includes sufficient reagents for labeling of 2 x 50 µg of antibody.	1 kit
AC2186	AzureSpectra Labeling Kit – 550	• Labeling Buffer	1 kit
AC2187	AzureSpectra Labeling Kit – 650	• Dye solution	1 kit
AC2188	AzureSpectra Labeling Kit – 700	• Quenching solution	1 kit
AC2189	AzureSpectra Labeling Kit – 800	• Neutralization buffer	1 kit
		• Two G-25 columns	1 kit

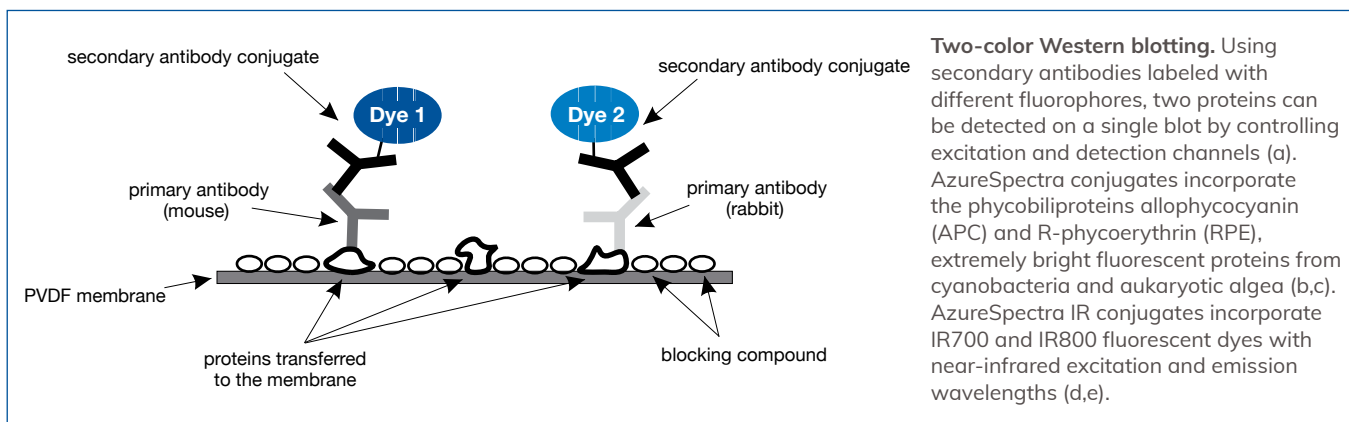
Fluorescent Detection



AzureSpectra Fluorescent Western Blotting Kits

Full kits for two-color fluorescent Western blots

AzureSpectra Western Blotting Kits provide everything you need to perform two-color fluorescent Western blots. Each kit includes pre-cut membranes, wash buffer, protein-free blocking buffer, quenching sheets, and secondary antibodies to detect two proteins per experiment. Offered with Protein-Free Block or Fluorescent Block.



Part Number	Name	Description	Size
AC2140	AzureSpectra rb700/ms800 Western Kit, with Protein Free Block	Kit contains materials for 10 Western Blots: PVDF membranes, wash buffer, protein free blocking buffer, secondary antibodies AzureSpectra rb700/ms800	1 kit
AC2141	AzureSpectra ms700/rb800 Western Kit, with Protein Free Block	Kit contains materials for 10 Western Blots: PVDF membranes, wash buffer, protein free blocking buffer, secondary antibodies AzureSpectra ms700/rb800	1 kit
AC2104	AzureSpectra rb700/ms800 Western Kit, with Protein Free Block	Kit contains materials for 10 Western Blots: PVDF membranes, wash buffer, protein free blocking buffer, secondary antibodies rb650/ms550	1 kit
AC2191	AzureSpectra rb700/ms800 Western Kit, with Fluorescent Block	Kit contains materials for 10 Western Blots: PVDF membranes, wash buffer, fluorescent blocking buffer, secondary antibodies AzureSpectra rb700/ms800	1 kit
AC2192	AzureSpectra ms700/rb800 Western Kit, with Fluorescent Block	Kit contains materials for 10 Western Blots: PVDF membranes, wash buffer, fluorescent blocking buffer, secondary antibodies AzureSpectra ms700/rb800	1 kit
AC2193	AzureSpectra rb650/ms550 Western Kit, with Fluorescent Block	Kit contains materials for 10 Western Blots: PVDF membranes, wash buffer, fluorescent blocking buffer, secondary antibodies AzureSpectra rb650/ms550	1 kit

Fluorescent Detection



AzureSpectra Fluorescent Demo Kits

New to fluorescent Western blotting?

Azure's Fluorescent Demo Kits contain everything you need to perform a single color fluorescent Western using your sample and primary antibodies.

Each kit contains enough material for 1 Western blot

- 9x7cm Low Fluorescence PVDF membrane
- 10x Fluorescent Blot Washing Buffer, 30mL
- 1x Fluorescent Blot Blocking Buffer, 30mL
- Secondary Antibody, 4μL
- Background Quenching Sheets, 2 sheets

Part Number	Name	Description	Size
AC2172	Azure Spectra Demo Kit – Goat Anti Mouse 700	Kit contains 1 PVDF membrane, blocking buffer, wash buffer, goat anti-mouse 700 secondary antibody	1 kit
AC2173	Azure Spectra Demo Kit – Goat Anti Rabbit 700	Kit contains 1 PVDF membrane, blocking buffer, wash buffer, goat anti-rabbit 700 secondary antibody	1 kit
AC2174	Azure Spectra Demo Kit – Goat Anti Mouse 800	Kit contains 1 PVDF membrane, blocking buffer, wash buffer, goat anti-mouse 800 secondary antibody	1 kit
AC2175	Azure Spectra Demo Kit – Goat Anti Rabbit 800	Kit contains 1 PVDF membrane, blocking buffer, wash buffer, goat anti-rabbit 800 secondary antibody	1 kit
AC2176	Azure Spectra Demo Kit – Goat Anti Mouse 650	Kit contains 1 PVDF membrane, blocking buffer, wash buffer, goat anti-mouse 650 secondary antibody	1 kit
AC2177	Azure Spectra Demo Kit – Goat Anti Rabbit 650	Kit contains 1 PVDF membrane, blocking buffer, wash buffer, goat anti-rabbit 650 secondary antibody	1 kit
AC2178	Azure Spectra Demo Kit – Goat Anti Mouse 550	Kit contains 1 PVDF membrane, blocking buffer, wash buffer, goat anti-mouse 550 secondary antibody	1 kit
AC2179	Azure Spectra Demo Kit – Goat Anti Rabbit 550	Kit contains 1 PVDF membrane, blocking buffer, wash buffer, goat anti-rabbit 550 secondary antibody	1 kit
AC2218	Azure Spectra Demo Kit – Goat Anti Mouse 490	Kit contains 1 PVDF membrane, blocking buffer, wash buffer, goat anti-mouse 490 secondary antibody	1 kit
AC2219	Azure Spectra Demo Kit – Goat Anti Rabbit 490	Kit contains 1 PVDF membrane, blocking buffer, wash buffer, goat anti-rabbit 490 secondary antibody	1 kit



MICROPLATE READER

Ao Absorbance Microplate Reader

Assaying your 96 well plates just got easier

A microplate reader is an essential part of a productive lab, with its application flexibility, sensitivity, and high-throughput capabilities. Its top-reading design is ideal for solution-based assays such as ELISAs, DNA and protein quantification, and enzyme kinetics.

- Stand-alone, top absorbance reader
- Large, easy-to-use 7-inch touch screen interface
- Pre-set and custom protocols
- Single and dual wavelength detection modes
- 8 position filter wheel: 5 standard filters (405, 450, 492, 595, and 630) plus 3 options from 340 – 750 nm
- Built-in shaker with speed selection
- Motorized door for easy sample loading
- 2 year warranty



Specifications

Plate Type
Wavelength Range
Filters
Light Source
Dynamic Range
Resolution
Linearity (@ 405 nm)
Accuracy (@ 405 nm)
Precision (@ 405 nm)
Read Modes
Read Speed
Shaker
Data Output
Dimensions (W x D x H)
Weight

Ao Absorbance Microplate Reader	
	96-well Plates
	340-750 nm
	8 Position Filter Wheel includes 8 filters, 5 standard: 405, 450, 492, 595, and 630, and 3 selected from the filter catalogue.
	Quartz-halogen Lamp
	0-4.000 Abs
	0.001 Abs
	0-2.000 Abs $\leq \pm 1\%$, 2-4.000Abs $\leq \pm 2\%$
	0.005 $\pm 1\%$ (0-3 Abs), 0.005 $\pm 2\%$ (3-4 Abs)
	CV $\leq 0.2\%$ (0-3 Abs), CV $\leq 1.0\%$ (3-4 Abs)
	End Point, Dual Mode, Kinetic
	<6s Single Mode, 12s Dual Mode
	Shaker speeds: slow, medium, fast
	3 USB Ports, Optional Printer
	440 x 295 x 225 mm
	10 kg

Ao Absorbance Microplate Reader

Part Number	Name	Description
AC3000	Azure Ao Microplate Reader	This 96-well plate, absorbance microplate reader is a stand-alone system, wavelength range 340-750nm, including 8 position filter wheel with 8 filters: 405, 450, 492, 595, and 630 standard, plus 3 from the filter catalogue, built-in shaker with speed selection, single and dual-read modes, and analysis software

Accessories

Part Number	Description
AC3200	USB Thermal Printer
AC3201	USB Thermal Printer Paper, single roll

Filters

Part Number	Description
AC3100	Ao 340 nm Filter
AC3101	Ao 380nm Filter
AC3102	Ao 405 nm Filter
AC3103	Ao 415 nm Filter
AC3104	Ao 450 nm Filter
AC3115	Ao 470 nm Filter
AC3116	Ao 490 nm Filter
AC3105	Ao 492 nm Filter
AC3117	Ao 510 nm Filter
AC3118	Ao 520 nm Filter
AC3119	Ao 525 nm Filter
AC3120	Ao 532 nm Filter
AC3106	Ao 540 nm Filter
AC3121	Ao 545 nm Filter
AC3122	Ao 560 nm Filter

Part Number	Description
AC3123	Ao 562 nm Filter
AC3107	Ao 570 nm Filter
AC3108	Ao 578 nm Filter
AC3109	Ao 590 nm Filter
AC3110	Ao 595 nm Filter
AC3124	Ao 600 nm Filter
AC3125	Ao 620 nm Filter
AC3111	Ao 630 nm Filter
AC3126	Ao 646 nm Filter
AC3112	Ao 650 nm Filter
AC3127	Ao 663 nm Filter
AC3113	Ao 690 nm Filter
AC3128	Ao 700 nm Filter
AC3114	Ao 750 nm Filter

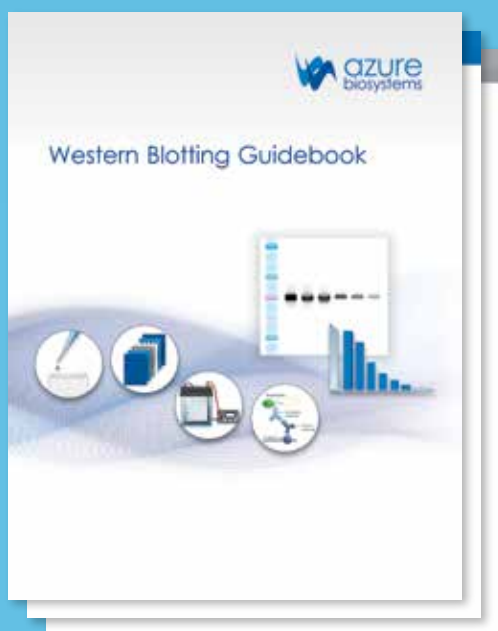
Notes

New to Western blotting?

Need to troubleshoot your Western blot?

Want to brush up on Western blotting best practices?

Take a look at Azure Biosystems FREE “2019 Guide to Western Blotting” for the latest on fluorescent and chemiluminescent Western blots.



GET THE GUIDE

azurebiosystems.com/guidebook

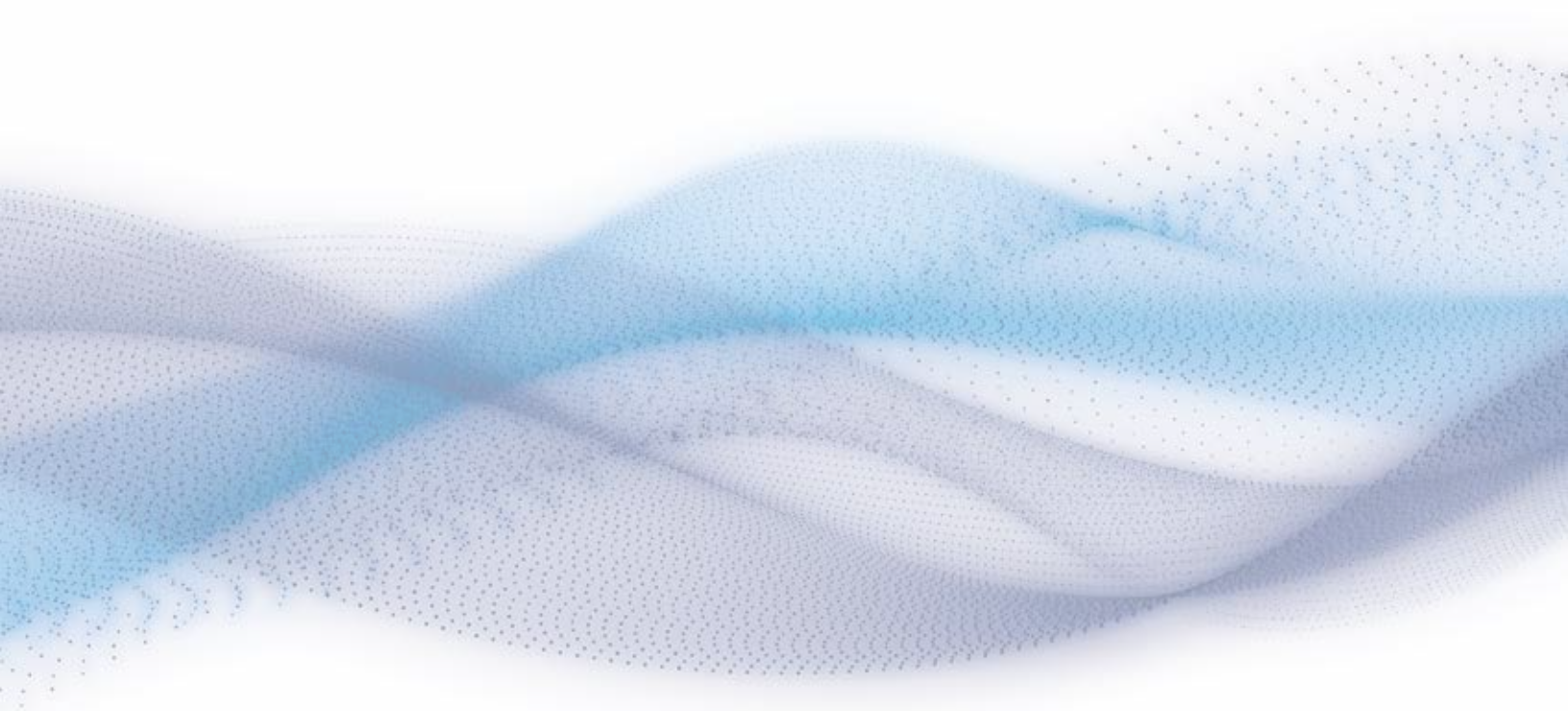
Complete Technical Manual

- Protocols
- Tips and tricks
- Troubleshooting
- MORE



Notes

[illegible]



www.azurebiosystems.com • info@azurebiosystems.com

Copyright © 2019 Azure Biosystems. All rights reserved. The Azure Biosystems logo, Azure Biosystems™, cSeries™, Sapphire™ and Radiance™ are trademarks of Azure Biosystems, Inc. More information about Azure Biosystems intellectual property assets, including patents, trademarks and copyrights, is available at www.azurebiosystems.com or by contacting us by phone or email. All other trademarks are property of their respective owners.